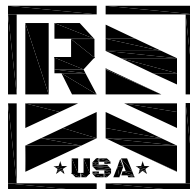
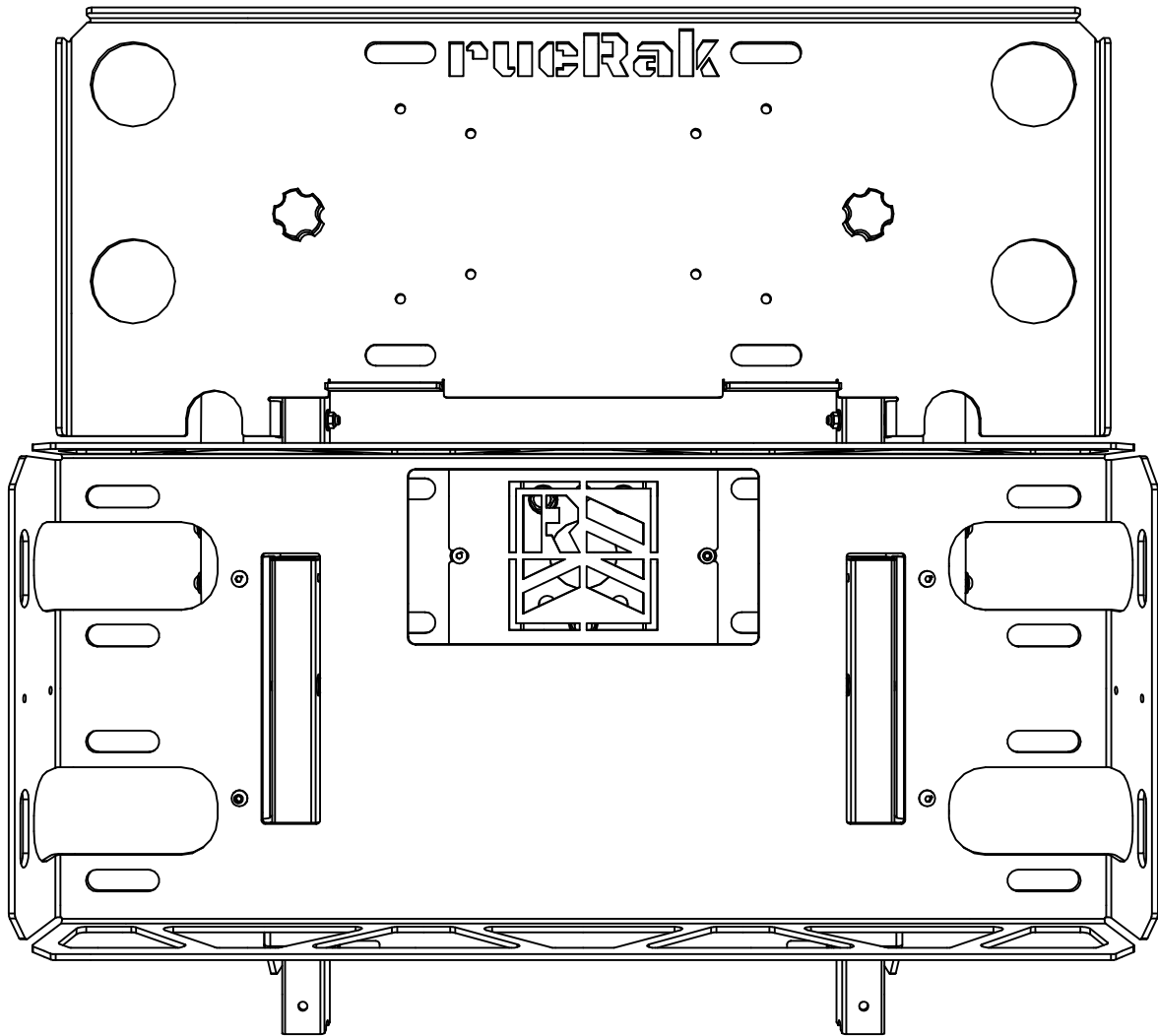
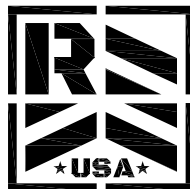
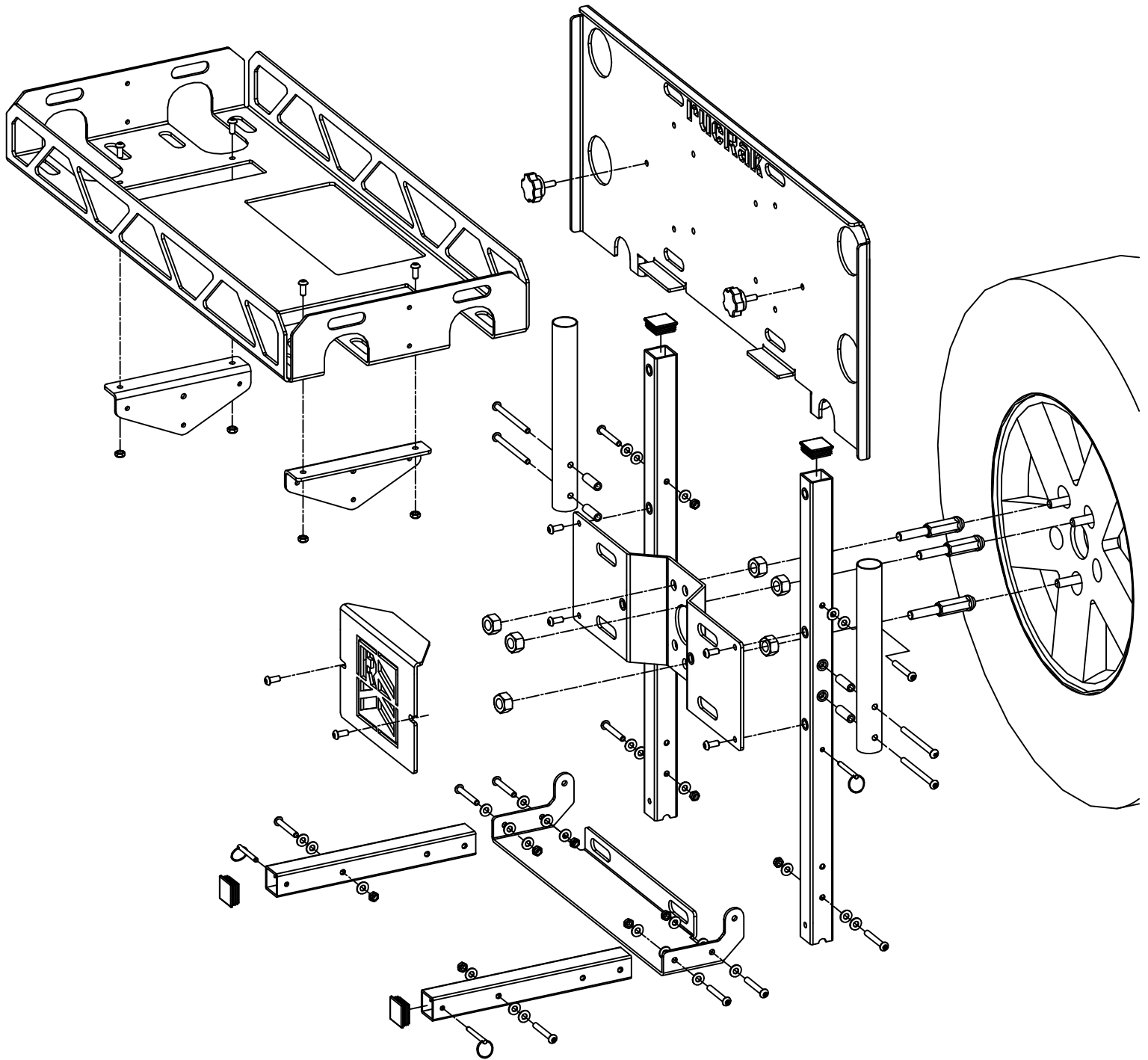


# rueRak

*Get Carried Away*

## INSTALLATION INSTRUCTIONS UNIVERSAL MOUNTING STUDS





# CAUTION

ENSURE THAT YOUR VEHICLE IS EQUIPPED TO ACCOMMODATE EXCESSIVE WEIGHT FOR THE ADDITION OF NON-FACTORY ACCESSORIES.

USE OF THIS MULTIPURPOSE RACK AND ANY OF THE COMPONENTS EITHER DIRECTLY ATTACHED OR ASSOCIATED WITH THE MULTIPURPOSE RACK IS AT THE OWNER'S RISK.

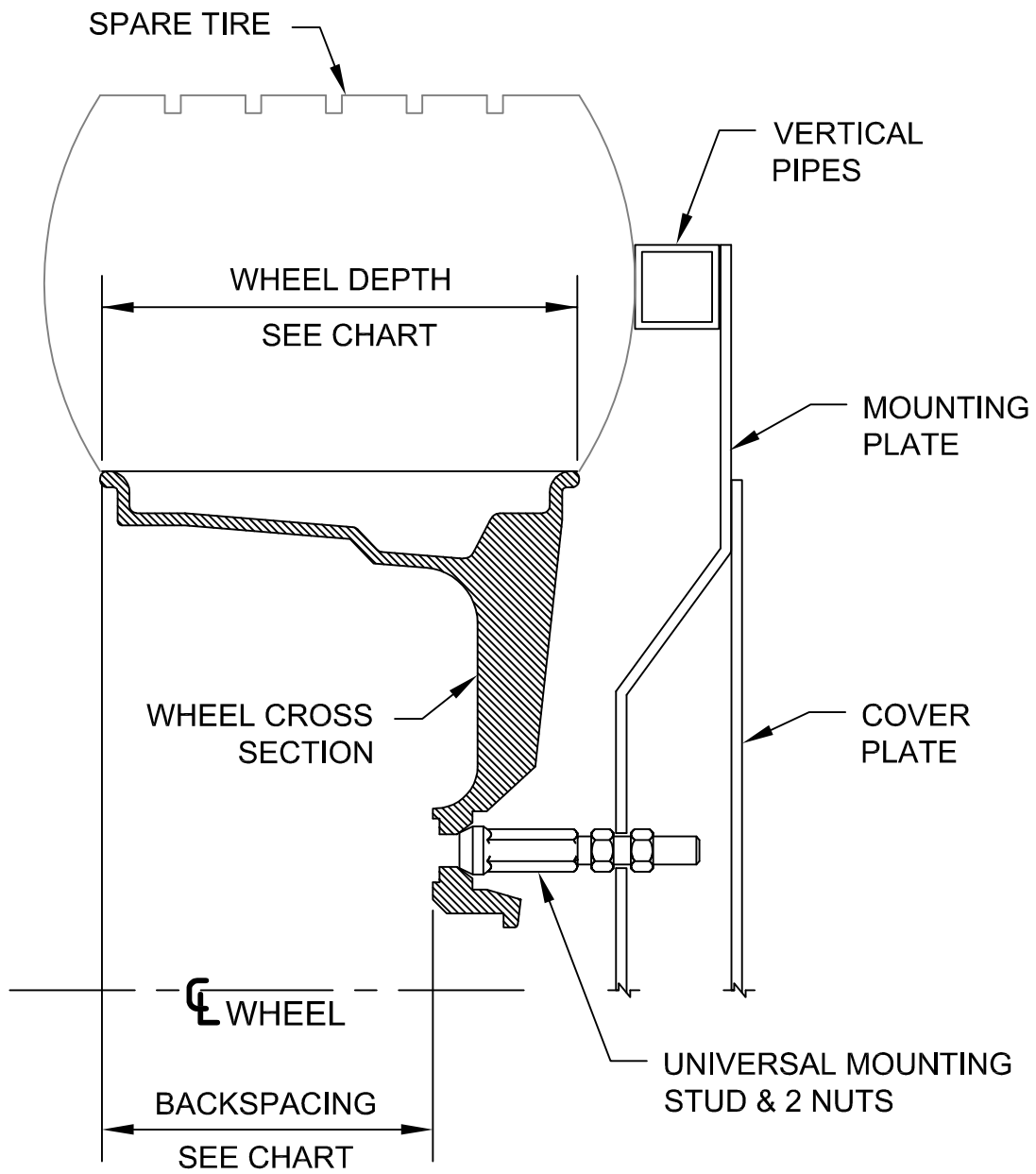
RUCRAK INC. ASSUMES NO LIABILITY FOR VEHICLE DAMAGE, PROPERTY DAMAGE OR PERSONAL INJURY WHILE USING THIS PRODUCT.

THE RUCRAK MULTIPURPOSE RACK SYSTEM AND ANY OF THE COMPONENTS ARE INTENDED FOR OFF-ROAD USE ONLY. PLEASE FOLLOW ALL STATE AND LOCAL DOT LAWS WHILE USING THIS PRODUCT.

FOR TECHNICAL SUPPORT AND WARRANTY INFORMATION, PLEASE VISIT OUR WEBSITE.

[WWW.RUCRAK.COM](http://WWW.RUCRAK.COM)



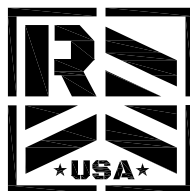


**IMPORTANT NOTE:**

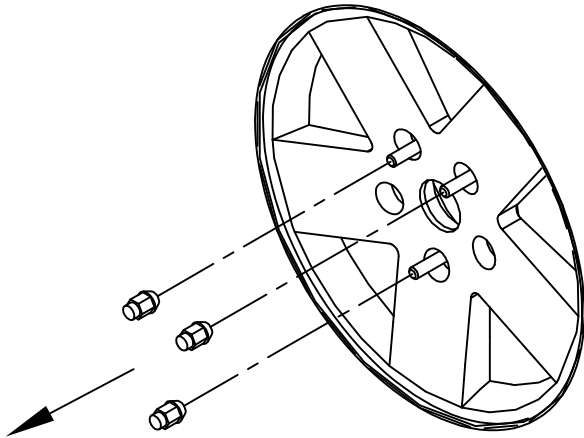
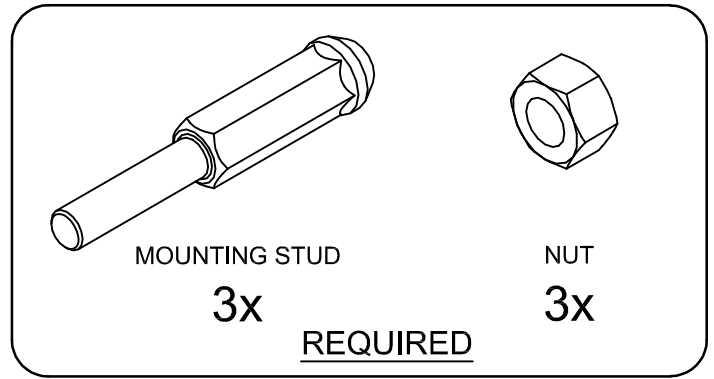
THE RUCRAK MULTIPURPOSE CARGO SYSTEM WAS DESIGNED TO FIT THE FACTORY OEM SPARE TIRE AND WHEEL COMBINATION FOR WRANGLERS YJ, TJ 87-06 & JK, JL 07-CURRENT.

HOWEVER, IF A CUSTOM SPARE TIRE AND WHEEL ARE BEING USED, PLEASE REFER TO THE WHEEL SIZE CHART TO INSURE PROPER FITMENT.

WHEEL SIZE CHART	
WHEEL DEPTH	BACKSPACE RANGE
8.5" DEEP	3.25" THRU 4.5"
9.0" DEEP	3.75" THRU 4.5"
9.5" DEEP	4.25" THRU 4.5"

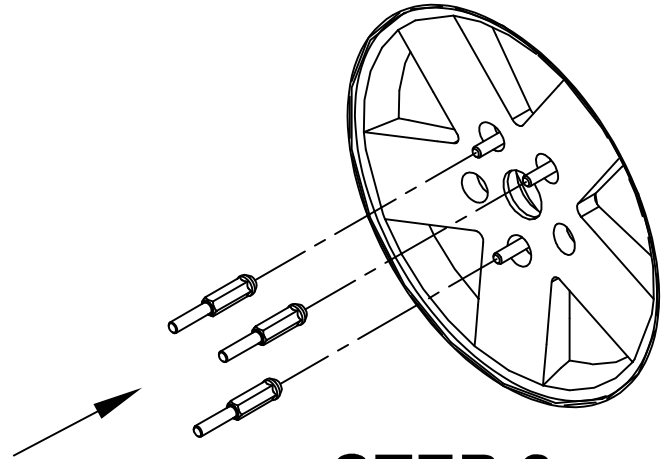


# STEP 1 THRU STEP 3



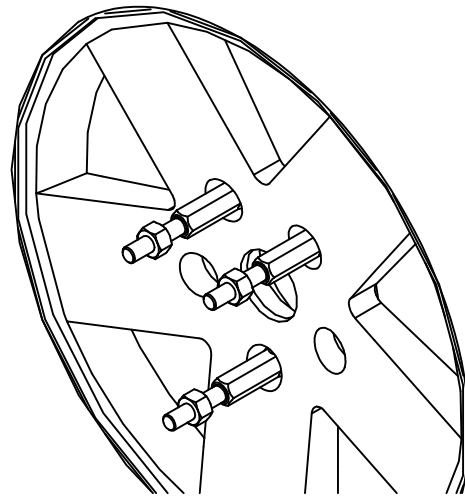
## STEP 1

REMOVE OEM LUGS FROM SPARE TIRE



## STEP 2

INSTALL SUPER-COOL UNIVERSAL MOUNTING STUDS!



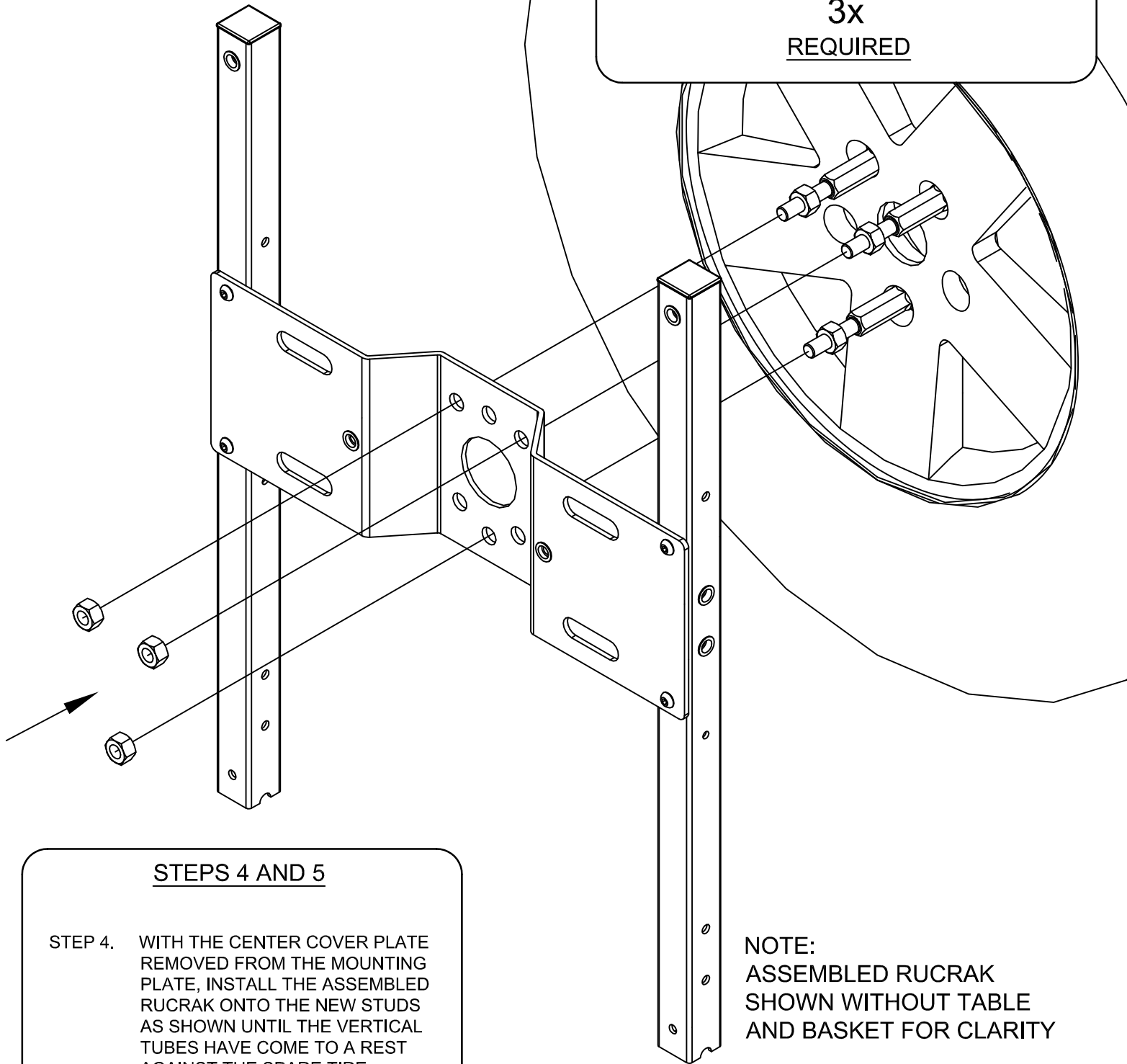
## STEP 3

THREAD ONE NUT ONTO EACH STUD. DO NOT TIGHTEN.

### STEPS 1 THRU 3

- STEP 1. REMOVE ORIGINAL LUGS FROM THE SPARE TIRE.
- STEP 2. INSTALL UNIVERSAL MOUNTING STUDS AND TIGHTEN TO THE ORIGINAL LUG SPECIFICATION.
- STEP 3. INSTALL 3 OF THE 6 SUPPLIED NUTS AS SHOWN WITHOUT TIGHTENING. THESE WILL BE ADJUSTED AFTER THE MOUNTING PLATE HAS BEEN INSTALLED.

# STEP 4 AND STEP 5



## STEPS 4 AND 5

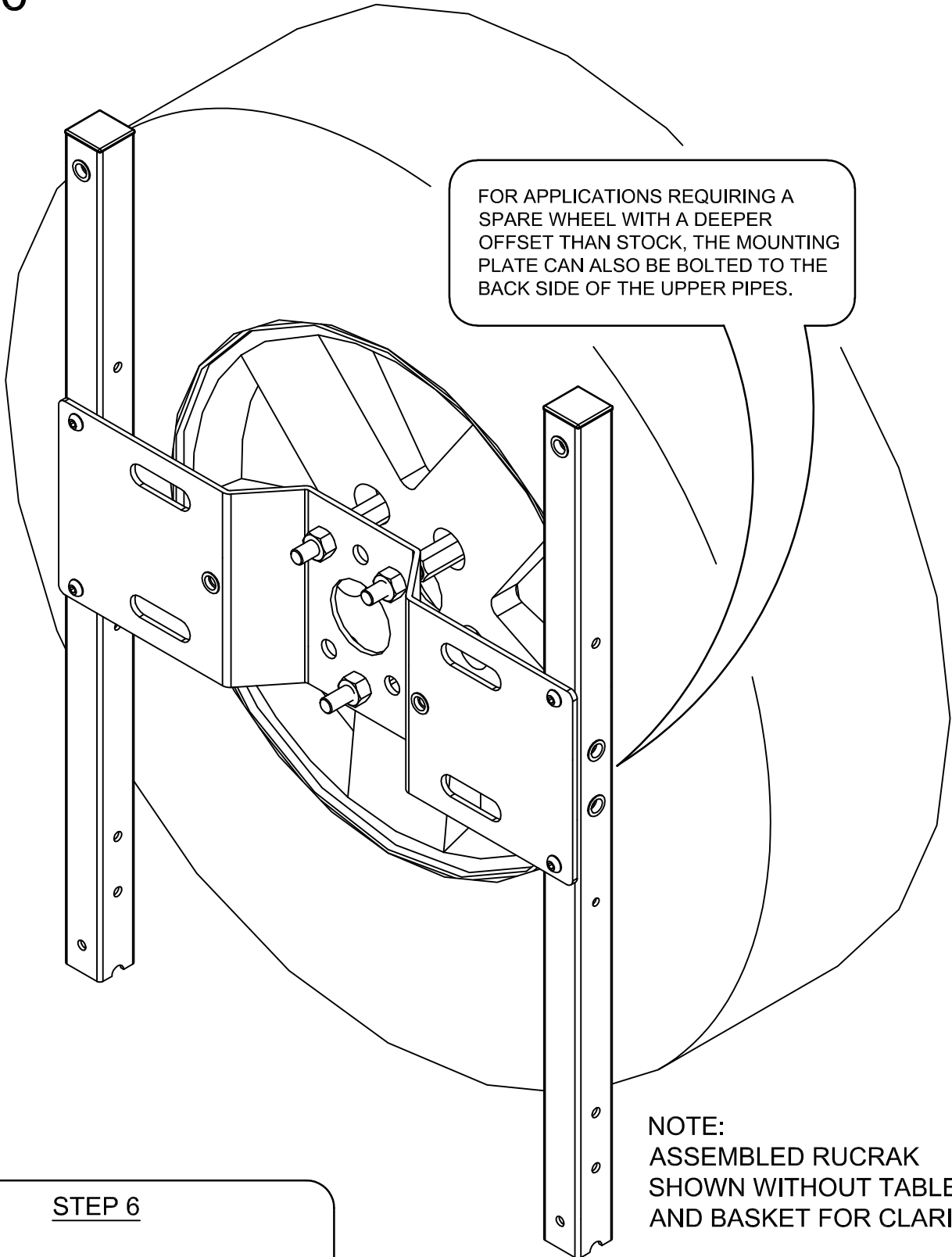
STEP 4. WITH THE CENTER COVER PLATE REMOVED FROM THE MOUNTING PLATE, INSTALL THE ASSEMBLED RUCRAK ONTO THE NEW STUDS AS SHOWN UNTIL THE VERTICAL TUBES HAVE COME TO A REST AGAINST THE SPARE TIRE.

STEP 5. THREAD THE 3 REMAINING NUTS ONTO THE STUDS UNTIL THEY ARE TIGHT AGAINST THE MOUNTING PLATE.

NOTE:  
ASSEMBLED RUCRAK  
SHOWN WITHOUT TABLE  
AND BASKET FOR CLARITY



# STEP 6



FOR APPLICATIONS REQUIRING A SPARE WHEEL WITH A DEEPER OFFSET THAN STOCK, THE MOUNTING PLATE CAN ALSO BE BOLTED TO THE BACK SIDE OF THE UPPER PIPES.

## STEP 6

STEP 6. TIGHTEN THE NUTS FROM THE PREVIOUS STEP 3 AGAINST THE BACK OF THE MOUNTING PLATE UNTIL SECURE. ADJUST AS NECESSARY UNTIL RUCRAK FRAME IS SNUG AGAINST TIRE AND DOES NOT MOVE.

NOTE:  
ASSEMBLED RUCRAK  
SHOWN WITHOUT TABLE  
AND BASKET FOR CLARITY